

**GENERAL INFORMATION**

**POLLY™**

Hollow Wall Anchor

**PRODUCT DESCRIPTION**

The Polly is a sleeve type hollow wall anchor designed for use in base materials such as plaster, wallboard, or hollow tile. Once the anchor has been set, the screw may be removed as often as necessary without affecting the anchor.

**FEATURES AND BENEFITS**

- + Allows for fixture and screw removal and re-anchoring
- + Federal GSA Specification – The Polly meets the descriptive requirements of FF-B-588D, Type III, Class A (Standard Polly) and Class B (Drive Polly)

**MATERIAL SPECIFICATIONS**

Anchor Component	Component Material
Anchor Body	Carbon Steel
Machine Screw	Carbon Steel
Plating	ASTM B633, SC1, Type III

**INSTALLATION SPECIFICATIONS**

Dimensions	Anchor Diameter, d		
	1/8"	3/16"	1/4"
ANSI Drill Bit Size (in.)	5/16	3/8	7/16
Collar Diameter (in.)	1/2	5/8	11/16
Body Diameter (in.)	17/64	3/8	7/16
Thread Size (UNC)	6-32	10-24	1/4-20

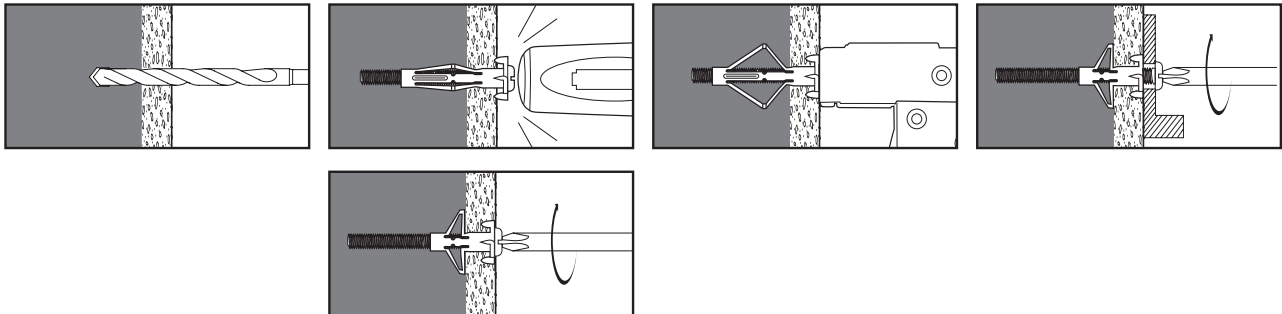
**INSTALLATION GUIDELINES**

Drill a hole through the base material into the hollow area. The drive version of the Polly can be driven directly into the wallboard.

Inset the Polly and tap the head until the gripper prongs are embedded in the base material. Maintain pressure with the screwdriver while turning the screw until a definite resistance is felt, indication the Polly is set.

For faster setting, use the Polly setting tool. Back screw head out 2-3 turns, slide the tool behind the screw head, then squeeze the tool to expand the Polly. This tool fits all sizes.

To complete the installation, remove the screw, line up mounting hole of item to be fastened, re-insert screw and tighten.



**SECTION CONTENTS**

General Information..... 1  
 Installation Guidelines..... 1  
 Performance Data..... 2  
 Ordering Information..... 3



POLLY

**ANCHOR MATERIALS**

- Carbon Steel

**ANCHOR SIZE RANGE (TYP.)**

- 1/8" Extra Short to 1/4" Extra Long

**SUITABLE BASE MATERIALS**

- Wallboard
- Plywood

**PERFORMANCE DATA**

**Ultimate Load Capacities for Polly in Wallboard<sup>1</sup>**

Anchor Diameter in. (mm)	3/8" Wallboard		1/2" Wallboard		5/8" Wallboard		3/4" Wallboard	
	Tension lbs. (kN)	Shear lbs. (kN)	Tension lbs. (kN)	Shear lbs. (kN)	Tension lbs. (kN)	Shear lbs. (kN)	Tension lbs. (kN)	Shear lbs. (kN)
1/8 (3.2)	80 (0.4)	110 (0.5)	150 (0.7)	170 (0.8)	160 (0.7)	195 (0.9)	170 (0.8)	210 (0.9)
3/16 (4.8)	90 (0.4)	130 (0.6)	175 (0.8)	180 (0.8)	190 (0.9)	210 (0.9)	210 (0.9)	220 (1.0)
1/4 (6.4)	95 (0.4)	150 (0.7)	200 (0.9)	200 (0.9)	220 (1.0)	220 (1.0)	245 (1.1)	250 (1.1)

1. Ultimate load capacities are provided for reference and must be reduced by a minimum safety factor of 4.0 or greater to determine allowable working loads.

**Allowable Load Capacities for Polly in Wallboard<sup>1</sup>**

Anchor Diameter in. (mm)	3/8" Wallboard		1/2" Wallboard		5/8" Wallboard		3/4" Wallboard	
	Tension lbs. (kN)	Shear lbs. (kN)	Tension lbs. (kN)	Shear lbs. (kN)	Tension lbs. (kN)	Shear lbs. (kN)	Tension lbs. (kN)	Shear lbs. (kN)
1/8 (3.2)	20 (0.1)	30 (0.1)	40 (0.2)	45 (0.2)	40 (0.2)	50 (0.2)	45 (0.2)	55 (0.2)
3/16 (4.8)	25 (0.1)	35 (0.2)	45 (0.2)	45 (0.2)	50 (0.2)	55 (0.2)	55 (0.2)	55 (0.2)
1/4 (6.4)	25 (0.1)	40 (0.2)	50 (0.2)	50 (0.2)	55 (0.2)	55 (0.2)	60 (0.3)	65 (0.3)

1. Allowable load capacities listed are calculated using an applied safety factor of 4.0.

**Ultimate Load Capacities for Polly in Plywood<sup>1</sup>**

Anchor Diameter in. (mm)	1/8" Plywood		1/4" Plywood		3/8" Plywood		1/2" Plywood		5/8" Plywood	
	Tension lbs. (kN)	Shear lbs. (kN)	Tension lbs. (kN)	Shear lbs. (kN)	Tension lbs. (kN)	Shear lbs. (kN)	Tension lbs. (kN)	Shear lbs. (kN)	Tension lbs. (kN)	Shear lbs. (kN)
1/8 (3.2)	110 (0.5)	100 (0.5)	125 (0.6)	450 (2.0)	200 (0.9)	450 (2.0)	300 (1.4)	450 (2.0)	420 (1.9)	450 (2.0)
3/16 (4.8)	-	-	-	-	320 (1.4)	580 (2.6)	420 (1.9)	610 (2.7)	500 (2.3)	640 (2.9)
1/4 (6.4)	-	-	-	-	400 (1.8)	720 (3.2)	480 (2.2)	830 (3.7)	560 (2.5)	900 (4.1)

1. Ultimate load capacities are provided for reference and must be reduced by a minimum safety factor of 4.0 or greater to determine allowable working loads.

**Allowable Load Capacities for Polly in Plywood<sup>1</sup>**

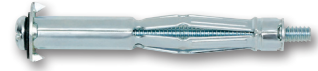
Anchor Diameter in. (mm)	1/8" Plywood		1/4" Plywood		3/8" Plywood		1/2" Plywood		5/8" Plywood	
	Tension lbs. (kN)	Shear lbs. (kN)	Tension lbs. (kN)	Shear lbs. (kN)	Tension lbs. (kN)	Shear lbs. (kN)	Tension lbs. (kN)	Shear lbs. (kN)	Tension lbs. (kN)	Shear lbs. (kN)
1/8 (3.2)	30 (0.1)	25 (0.1)	30 (0.1)	115 (0.5)	50 (0.2)	115 (0.5)	75 (0.3)	115 (0.5)	105 (0.5)	115 (0.5)
3/16 (4.8)	-	-	-	-	80 (0.4)	145 (0.7)	105 (0.5)	155 (0.7)	125 (0.6)	160 (0.7)
1/4 (6.4)	-	-	-	-	100 (0.5)	180 (0.8)	120 (0.5)	210 (0.9)	140 (0.6)	225 (1.0)

1. Allowable load capacities listed are calculated using an applied safety factor of 4.0.

**POLLY™**  
Hollow Wall Anchor

**ORDERING INFORMATION**
**Standard Polly with Combination Slotted Phillips Head**

Cat No.	Anchor Size	Screw Length	Drill Diameter	Wall Thickness	Standard Box	Standard Carton
2100	1/8" Ex. Short	1-1/16"	5/16"	1/8" to 1/4"	100	500
2101	1/8" Short	1-3/4"	5/16"	3/8" to 1/2"	100	500
2102	1/8" Long	2-1/4"	5/16"	5/8" to 1"	100	500
2111	3/16" Short	2"	3/8"	3/8" to 5/8"	50	250
2112	3/16" Long	2-1/2"	3/8"	3/4" to 1-1/8"	50	250
2121	1/4" Short	2-1/4"	7/16"	3/8" to 1/2"	50	250
2122	1/4" Long	2-3/4"	7/16"	5/8" to 1-1/8"	50	250


**Standard Polly with Combination Slotted Hex Head**

Cat No.	Anchor Size	Screw Length	Drill Diameter	Wall Thickness	Standard Box	Standard Carton
2105	1/8" Short	1-3/4"	5/16"	3/8" to 1/2"	100	500


**Drive Polly**

Cat No.	Anchor Size	Screw Length	Drill Diameter	Wall Thickness	Standard Box	Standard Carton
2182	1/8" Short	2"	-	3/8" to 1/2"	100	500
2184	1/8" Long	2-3/8"	-	1/2" to 3/4"	100	500


**Polly Setting Tool (Fits All Sizes)**

Cat No.	Standard Box	Standard Carton
2150	1	1

