

GENERAL INFORMATION

ZIP-TOGGLE®

Hollow Wall Anchor

PRODUCT DESCRIPTION

The Zip-Toggle is a self drilling hollow gypsum wallboard anchor designed to provide superior performance without the need to pre-drill larger diameter holes. The Zip-Toggle is packaged with its own No. 6 x 2" lubricated screw.

FEATURES AND BENEFITS

- + Self drills and uses a smaller hole versus toggles
- + Fast and easy installation
- + Heavy duty toggle design works in 3/8" to 5/8" wallboard
- + Fastens fixtures up to 3/4"

MATERIAL SPECIFICATIONS

Anchor Component	Component Material
Fastener Body	Zinc
Screw	Carbon Steel
Screw Plating	ASTM B633, SC1, Type III (Zn/Fe 5)

INSTALLATION SPECIFICATIONS

Recommended Screw Size	No. 6 x 2" (lubricated)
Threaded Length (in.)	21/64
Point Length (in.)	5/8
Anchor Length (in.)	2-1/8

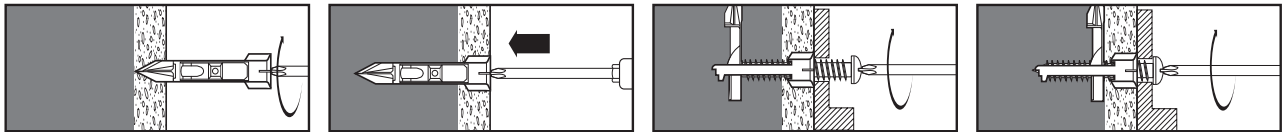
INSTALLATION GUIDELINES

Using a manual or low RPM battery powered electric screwdriver, insert a No.2 Phillips driver bit into the recess of the anchor and press the tip of the anchor into the wallboard until the cutting blades penetrate the surface.

Using gentle forward pressure, press the anchor further into the wall board until the collar is set flush with the surface of the wallboard.

Position the fixture and insert a No. 6 x 2" screw (packaged with the anchor). Press the screw into the anchor until the toggle portion is opened.

Tighten the screw until it feels secure with the toggle portion seated against the back of the wallboard. Do not over tighten. Note: Use only a No. 6 x 2" lubricated screw as packaged with the anchor.



PERFORMANCE DATA

Ultimate Load Capacities for Zip-Toggle in Wallboard¹

Anchor Size	Ultimate Load						Allowable Load					
	3/8" Wallboard		1/2" Wallboard		5/8" Wallboard		3/8" Wallboard		1/2" Wallboard		5/8" Wallboard	
	Tension lbs. (kN)	Shear lbs. (kN)	Tension lbs. (kN)	Shear lbs. (kN)	Tension lbs. (kN)	Shear lbs. (kN)	Tension lbs. (kN)	Shear lbs. (kN)	Tension lbs. (kN)	Shear lbs. (kN)	Tension lbs. (kN)	Shear lbs. (kN)
No. 6 x 2" Screw	75 (0.3)	180 (0.8)	140 (0.6)	265 (1.2)	180 (0.8)	300 (1.4)	20 (0.1)	45 (0.2)	35 (0.2)	65 (0.3)	45 (0.2)	75 (0.3)

1. Ultimate load capacities are provided for reference and must be reduced by a minimum safety factor of 4.0 or greater to determine allowable working loads.

ORDERING INFORMATION

Zip-Toggle

Cat No.	Description	Standard Box	Standard Carton
2295	Zip-Toggle w/ No. 6 x 2" Screw	50	250

SECTION CONTENTS

General Information..... 1
 Installation Guidelines..... 1
 Performance Data..... 1
 Ordering Information..... 1



ZIP-TOGGLE

ANCHOR MATERIALS

- Zinc

ANCHOR SIZE RANGE (TYP.)

- No. 6 x 2" Screw
Wall Thickness from 3/8" to 5/8"

SUITABLE BASE MATERIALS

- Wallboard

