



# DEWALT®



# ICC-ES, FM, UL APPROVALS

## Bang-It®+ CONCRETE INSERT ANCHORS

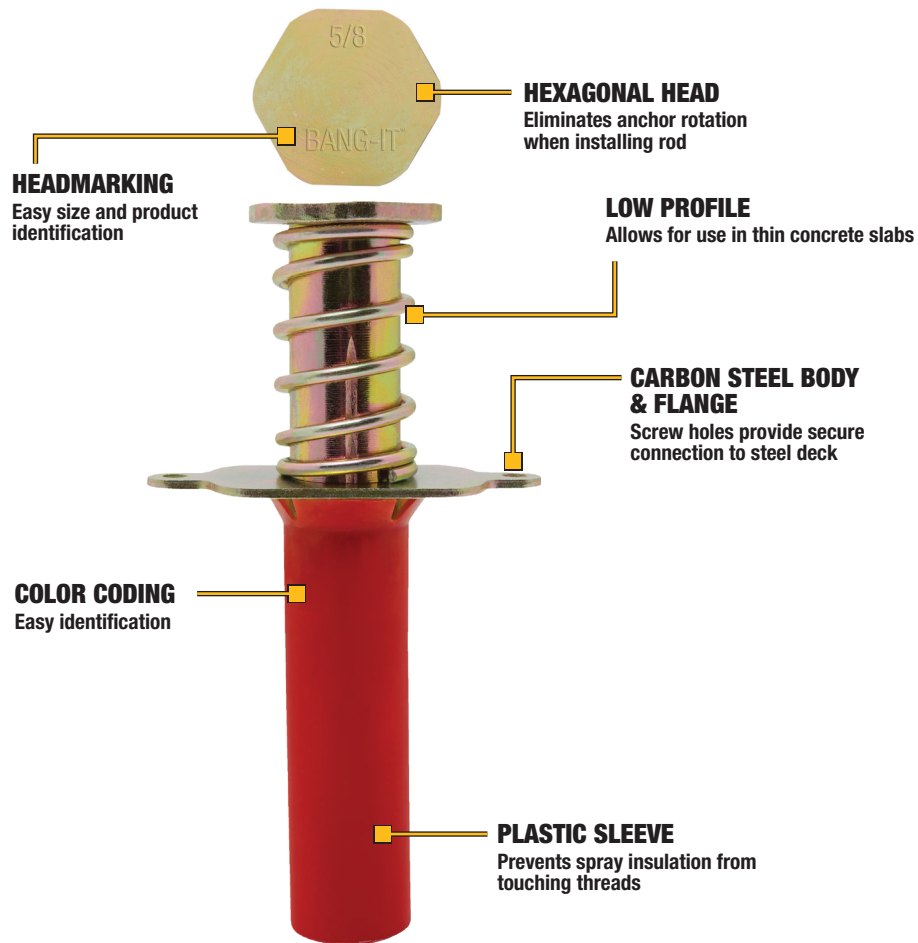
Install Bang-It+ concrete inserts in and through composite steel deck prior to newly poured concrete floors or roof slabs. These single, double, and triple threaded inserts are designed to provide hangar attachments for mechanical, electrical, plumbing/pipefitting and fire sprinkler trades. The protective sleeves are color coded by size and allow overhead attachment of 1/4" to 3/4" steel threaded rod. The sleeves also prevent losing the insert location and protect the internal thread of the insert. A hex head design offers resistance to rotation within the concrete as a universal steel threaded rod is being installed.



**GUARANTEED TOUGH.®**

**DWCIPMetalSS**

# SINGLE & DOUBLE THREAD BANG-IT®+



## SPECIFICATIONS

### SINGLE THREAD

CAT#	SIZE	COLOR	QTY-BOX	QTY-PALLET
07540-pwr	1/4"	Brown	100	3600
07542-pwr	3/8"	Green	100	3600
07544-pwr	1/2"	Yellow	100	3600
07546-pwr	5/8"	Red	50	1600
07548-pwr	3/4"	Purple	50	1600

### DOUBLE THREAD

CAT#	SIZE	COLOR	QTY-BOX	QTY-PALLET
PFM3521438	1/4"-3/8"	White	100	3200
07543-pwr	3/8"-1/2"	Grey	100	3200
PFM3525834	5/8"-3/4"	Black	50	1600

## SIZE COLOR CODE

### SINGLE THREAD

1/4"	3/8"	1/2"	5/8"	3/4"
------	------	------	------	------

### DOUBLE THREAD

1/4" - 3/8"	3/8" - 1/2"	5/8" - 3/4"
-------------	-------------	-------------

Copyright ©2020 DEWALT. The following are examples of trademarks for one or more DEWALT power tools and accessories: the yellow and black color scheme; the "D"-shaped air intake grill; the array of pyramids on the handgrip; the kit box configuration; and the array of lozenge-shaped humps on the surface of the tool.

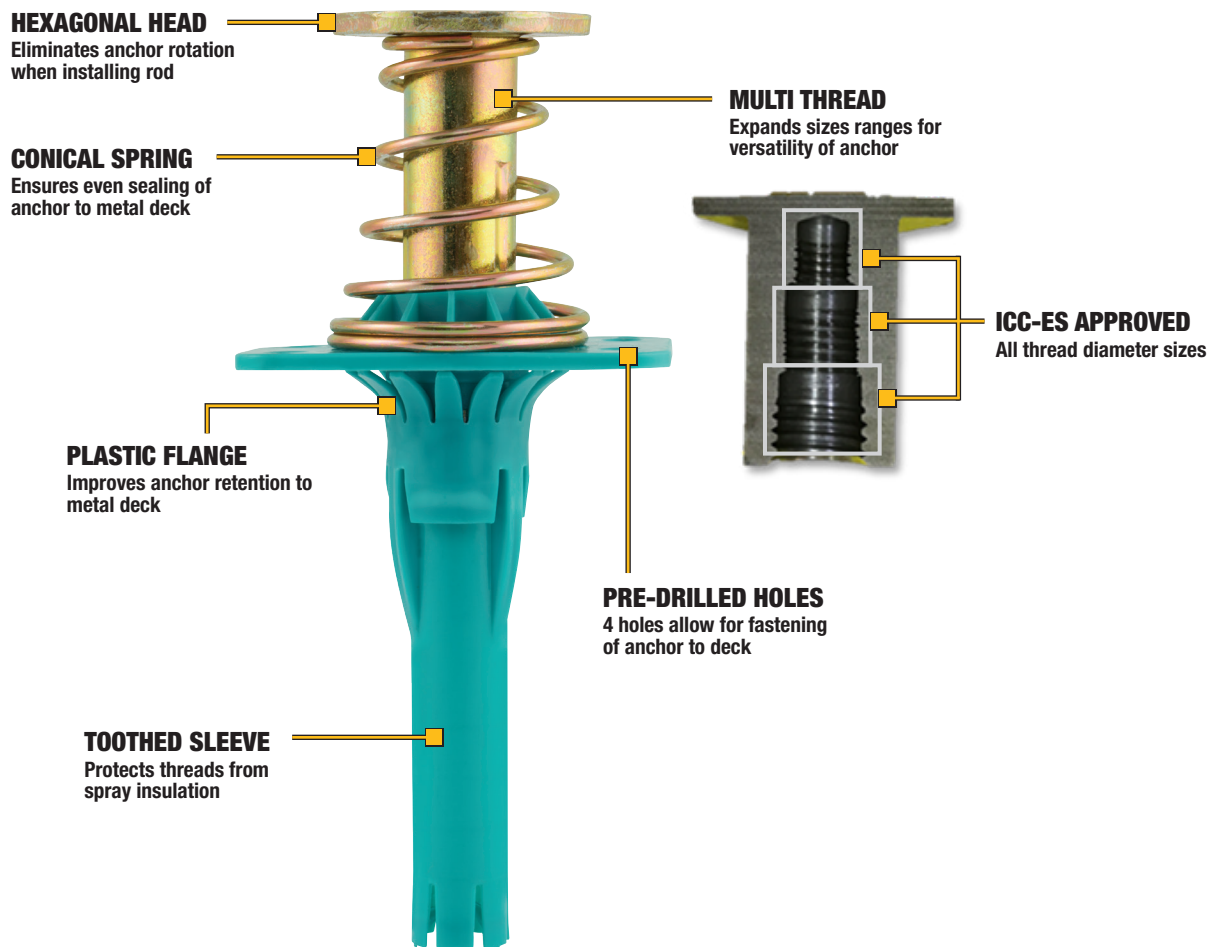
DWCIPMetalSS

**GUARANTEED TOUGH.®**

**1-800-4-DEWALT**

**www.DEWALT.com**

# TRIPLE THREAD BANG-IT®+



## SPECIFICATIONS

TRIPLE THREAD				
CAT#	SIZE	COLOR	QTY-BOX	QTY-PALLET
PFM353143812	1/4"-3/8"-1/2"	Teal	50	1600
PFM353381258	3/8"-1/2"-5/8"	Orange	50	1600

## SIZE COLOR CODE

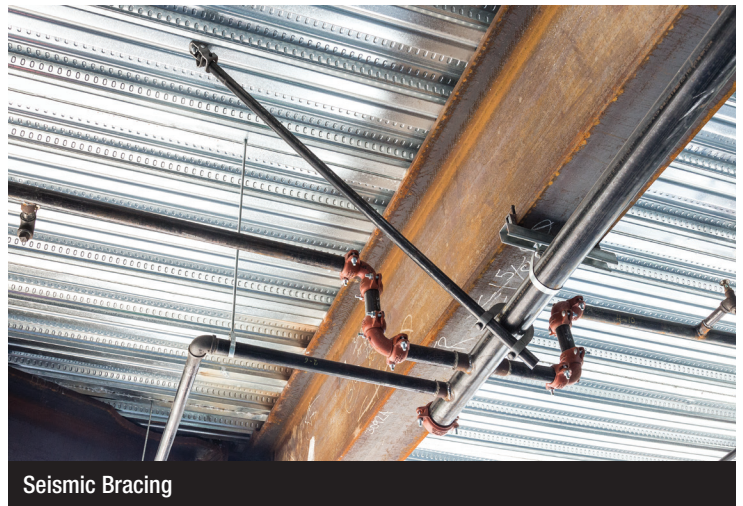
TRIPLE THREAD	
1/4" - 3/8" - 1/2"	3/8" - 1/2" - 5/8"

Copyright ©2020 DEWALT. The following are examples of trademarks for one or more DEWALT power tools and accessories: the yellow and black color scheme; the "D"-shaped air intake grill; the array of pyramids on the handgrip; the kit box configuration; and the array of lozenge-shaped humps on the surface of the tool.

DWCIPMetalSS

# TYPICAL APPLICATIONS

**MECHANICAL**  
**ELECTRICAL**  
**PLUMBING/PIPEFITTING**  
**FIRE SPRINKLER**  
**SEISMIC BRACING**



## BANG-IT+ INSTALLATION SYSTEMS

**20V Max\* XR<sup>®</sup>**  
**Lithium Ion Cordless**  
**Drill Driver Kit**

**DCD996P2**



**13/16"**  
**Carbide Hole Saw**

**07562-pwr**



**3/16" - 7/8"**  
**Impact Ready**  
**Step Drill Bit**

**DWA1786IR**



**Deck Drill Extension**

**PFM3611000**



**Centerbit**  
**with Spring**  
**Replacement**

**07566-pwr**



\* Maximum initial battery voltage (measured without a workload) is 20 volts. Nominal voltage is 18.

Copyright ©2020 DeWALT. The following are examples of trademarks for one or more DeWALT power tools and accessories: the yellow and black color scheme; the "D"-shaped air intake grill; the array of pyramids on the handgrip; the kit box configuration; and the array of lozenge-shaped humps on the surface of the tool.

DWCIPMetalISS

**GUARANTEED TOUGH.®**

**1-800-4-DEWALT**

**www.DEWALT.com**