

Pure110+[®] VS. Hilti* RE 500 V3 VS. Simpson* SET-3G

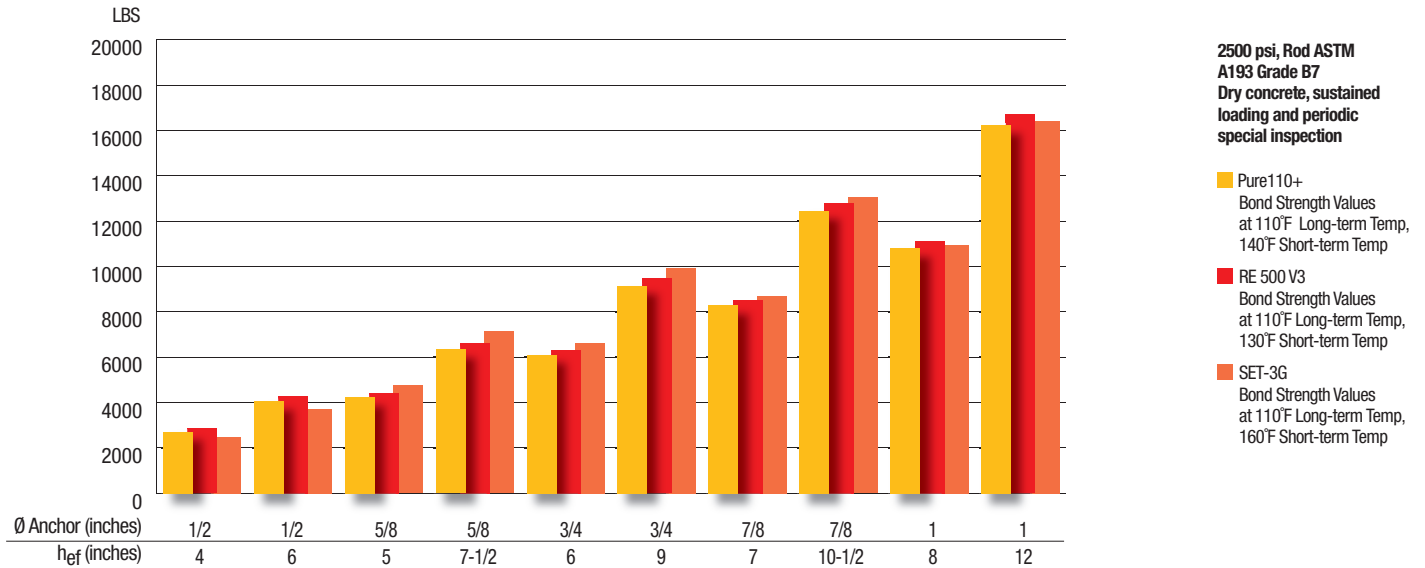
PRODUCT COMPARISON

Product Name	Pure110+	RE500 V3	SET-3G
Company	DEWALT	Hilti*	Simpson*
Description	Adhesive Anchoring System	Adhesive Anchoring System	Adhesive Anchoring System
Size Range (inch)	3/8, 1/2, 5/8, 3/4, 7/8, 1, 1-1/4 #3, #4, #5, #6, #7, #8, #9, #10	3/8, 1/2, 5/8, 3/4, 7/8, 1, 1-1/4 #3, #4, #5, #6, #7, #8, #9, #10	3/8, 1/2, 5/8, 3/4, 7/8, 1, 1-1/4 #3, #4, #5, #6, #7, #8, #10
ICC-ES ESR (concrete)	ESR-3298	ESR-3814	ESR-4057
Revision Date	2017 July	2017 January	2018 April
Cracked Concrete	Yes	Yes	Yes
Seismic Approval in Concrete	Yes	Yes	Yes
Post-Installed Rebar Design	Yes	Yes	No
LEED	Yes	Yes	Yes
VOC	Yes	Yes	Yes
NSF 61 (p otatable drinking water)	Yes	Yes	Yes

* Hilti is a registered trademark of Hilti Corporation *SET-3G and Simpson are registered trademarks of Simpson Strong-Tie Company Inc.

PRODUCT PERFORMANCE COMPARISON

Factored Sustained Tension Loads Cracked Concrete



Factored Shear Loads Cracked Concrete

